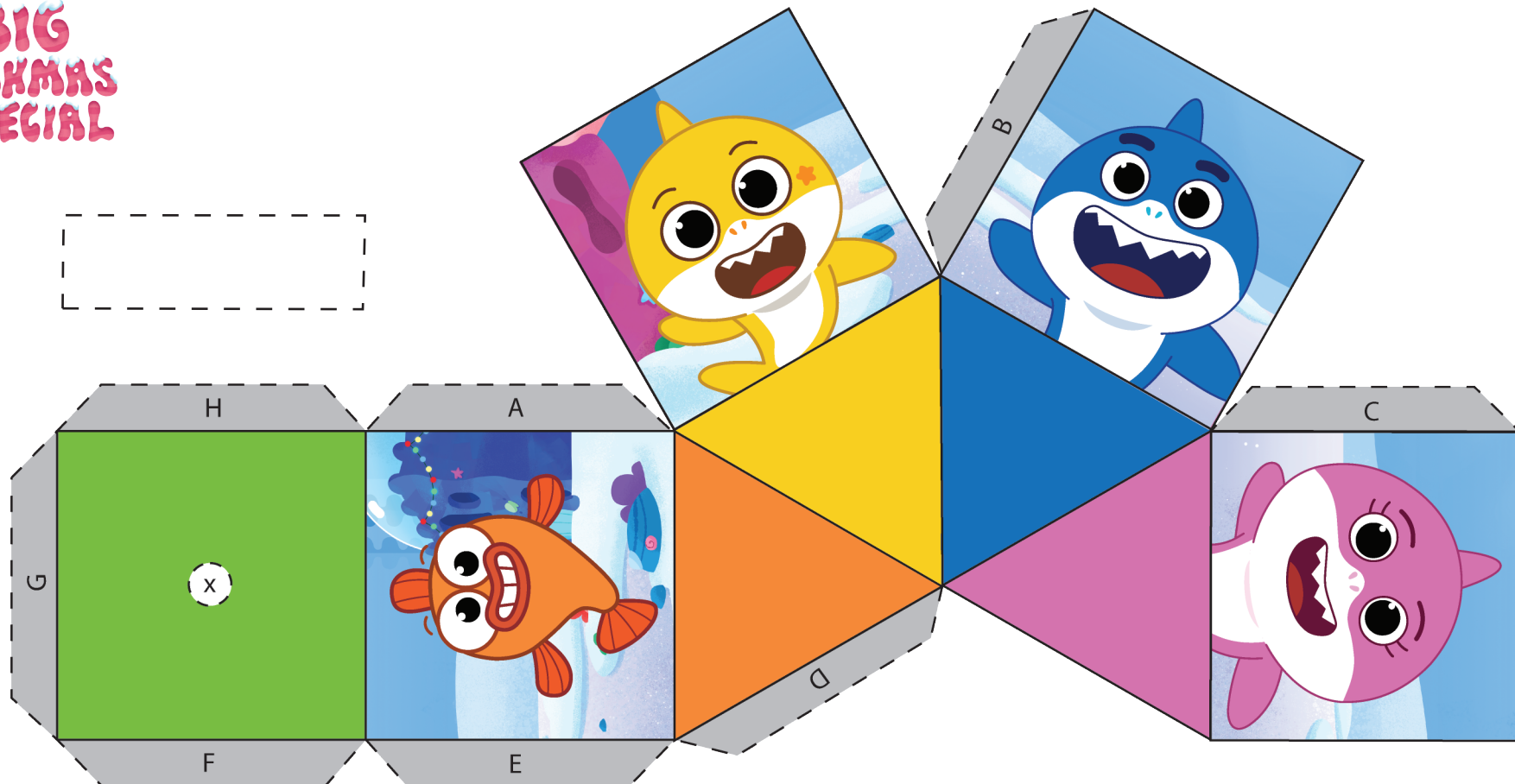


BABY SHARK'S
BIG
FISHMAS
SPECIAL



1. Cut along the outside of the printable. Cut out the white circle with an "x" on the top of the dreidel. Cut out the white box in the dashed lines and save for later. This will be your handle!
2. Fold paper IN along every solid line (including the gray flaps).
3. Roll up the white box into a small tube and tape shut. Stick tube through hole on the top of the dreidel and tape to the white side of the paper.
4. Put glue on flap A, then attach William to Baby Shark. Put glue on flap B and attach Baby Shark to Daddy Shark. Continue this process for flaps C through E.
5. Put glue on flaps F, G, and H, then connect the lid to the sides.
6. If glue doesn't work, try tape!