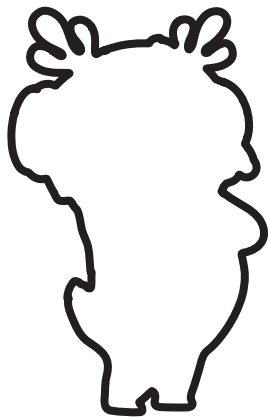
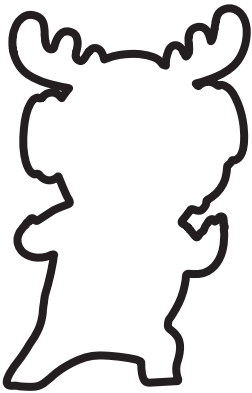
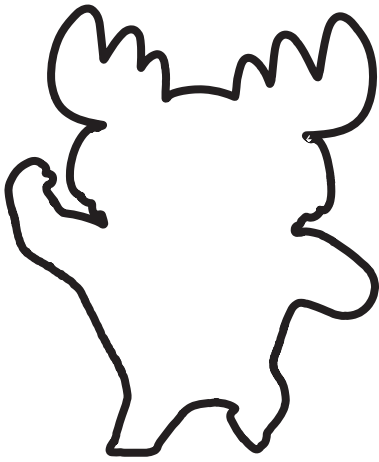


# Draw a line from the Deer Squad to their matching shapes!



**BOBBI**



**LOLA**



**KAI**



**RAMMY**



# RAMMY

- Rammy is strong and brave, but always remains calm under pressure
- He can fire balls of light and heat things up!



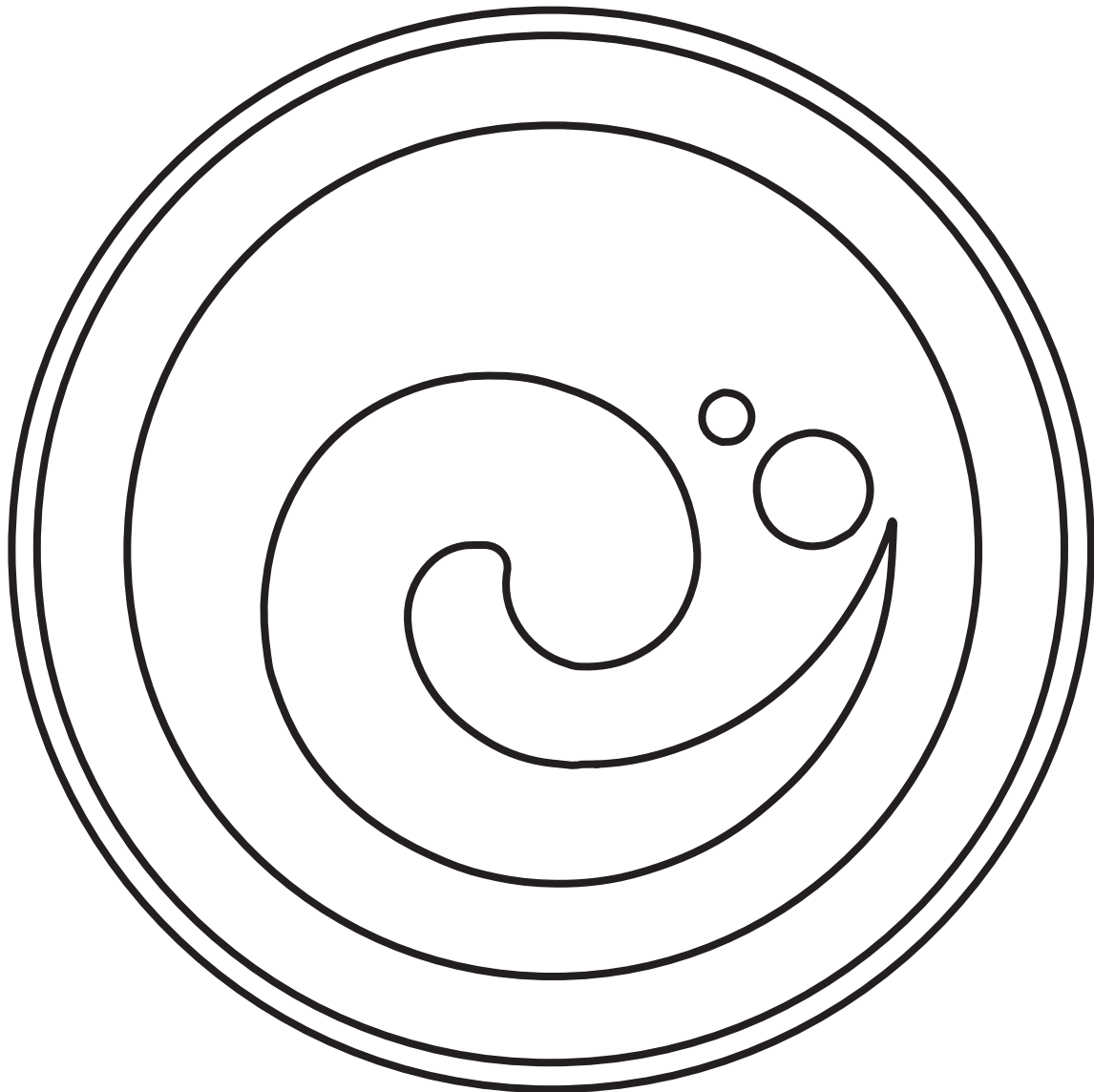


BOBBI

- He is the only one who can understand all animals!
- Bobbi can manipulate the ground, rocks, and mud



- Kai is the inventor of the group!
- He controls water and ice





LOLA

- An ace pilot who cares for animals in her rescue centre
- Her power is wood! She can make trees and branches grow