

If you have any questions, call our customer service line at (609) 619-8749 or email us at questions@refuelagency.com



68 Culver Road, Suite 110 Monmouth Junction, NJ 08852

Program Guidelines



nickelodeon

© 2021 Viacom International Inc. All Rights Reserved. Nickelodeon, Blue's Clues & You and all related titles, logos and characters are trademarks of Viacom International Inc.

Dear Teachers,

We are excited to share these Blue's Clues & You! educational activities made in partnership with Nickelodeon. We hope they help promote your students' development and enhance their preschool experience in a fun and interactive way. These materials were designed to help bring curiosity and enjoyment to your class each week. Please add these activities to any of your current lesson plans or use them as a bonus activity for a much-needed classroom break. Thank you for your participation!

Blue's Clues & You! Clue Board



Can your class figure out the clues on the Blue's Clues & You! Clue Board? Display the poster provided in your classroom and for the next four weeks, encourage your class and see if they can guess what Blue is trying to tell them! Each week has three clues that will give your students an idea of what Blue is thinking about. Discuss each clue and put them all together to find out! Follow up each activity with the suggested questions based on the solution or come up with your own!

Week #1

Question: What is Blue's favorite season?
The Clues: A Leaf, A Pumpkin, An Apple
Solution: Fall/Autumn
Follow-up Question: What's yours and why?

Week #2

Question: How do Blue and her friends get to school?
The Clues: A Rectangle, The Color Yellow, Wheels
Solution: A School Bus
Follow-up Questions: How else can we get to school? How do you get to school?

Week #3

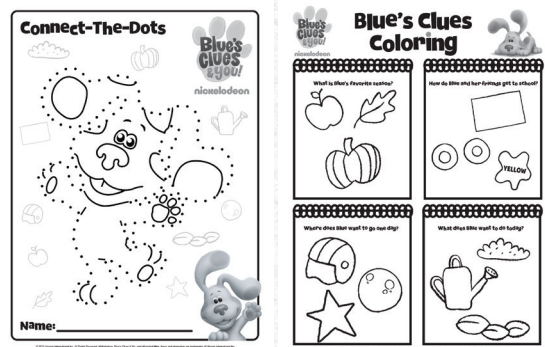
Question: Where does Blue want to go one day?
The Clues: Circle, Helmet, Stars
Solution: Outer Space
Follow-up Questions: What can you find in outer space? Can you name any planets?

Week #4

Question: What does Blue want to do today?
The Clues: Seeds, Watering Can, Dirt
Solution: Plant A Garden
Follow-up Question: What can you find in a garden?



Blue's Clues & You! Activity Sheets



These activity sheets have been provided so your class can follow along each week as you all discuss the clues Blue has left on the Blue's Clues & You! Clue Board. On one side there is a fun connect the dots and coloring activity that they can bring home and proudly hang once the program is completed. On the other side, your class can follow along each week and color in the clues as they try to figure out what Blue is trying to tell them!

Blue's Clues & You! Bookmarks



Distribute these fun bookmarks to your students.



Connect-The-Dots



nickelodeon



Name: _____





nickelodeon

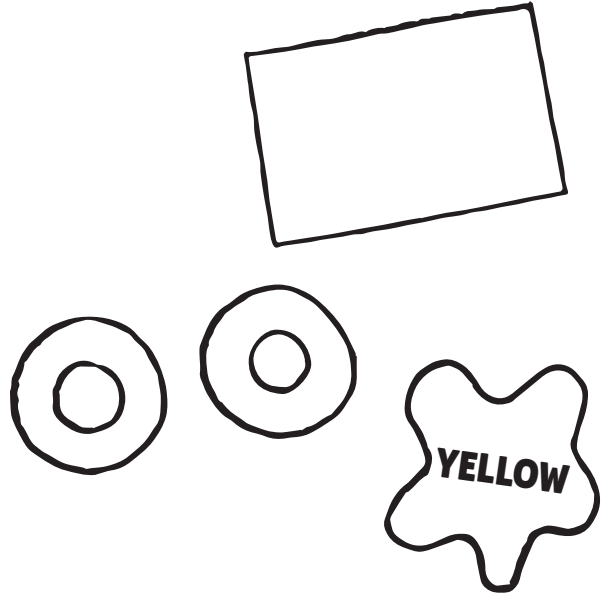
Blue's Clues Coloring



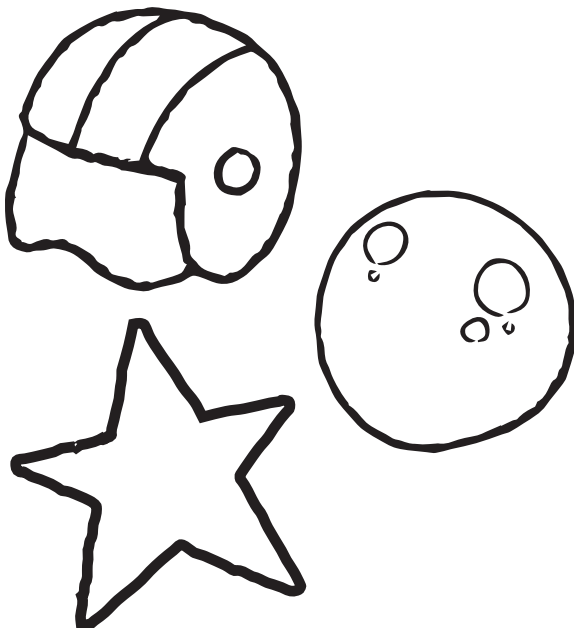
What is Blue's favorite season?



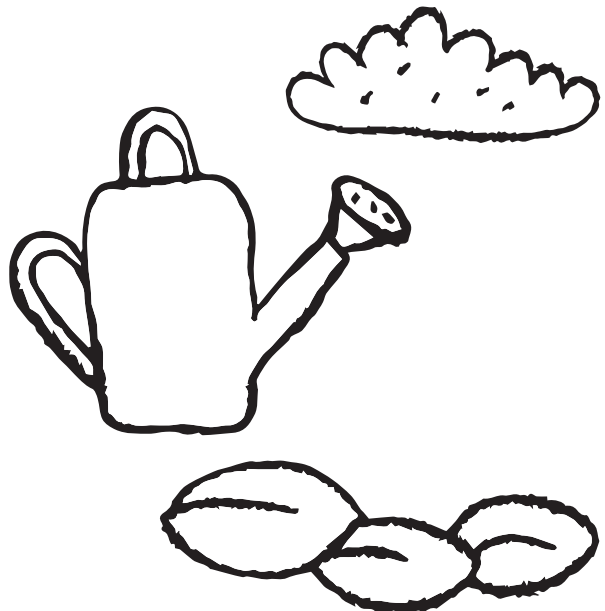
How do Blue and her friends get to school?



Where does Blue want to go one day?



What does Blue want to do today?

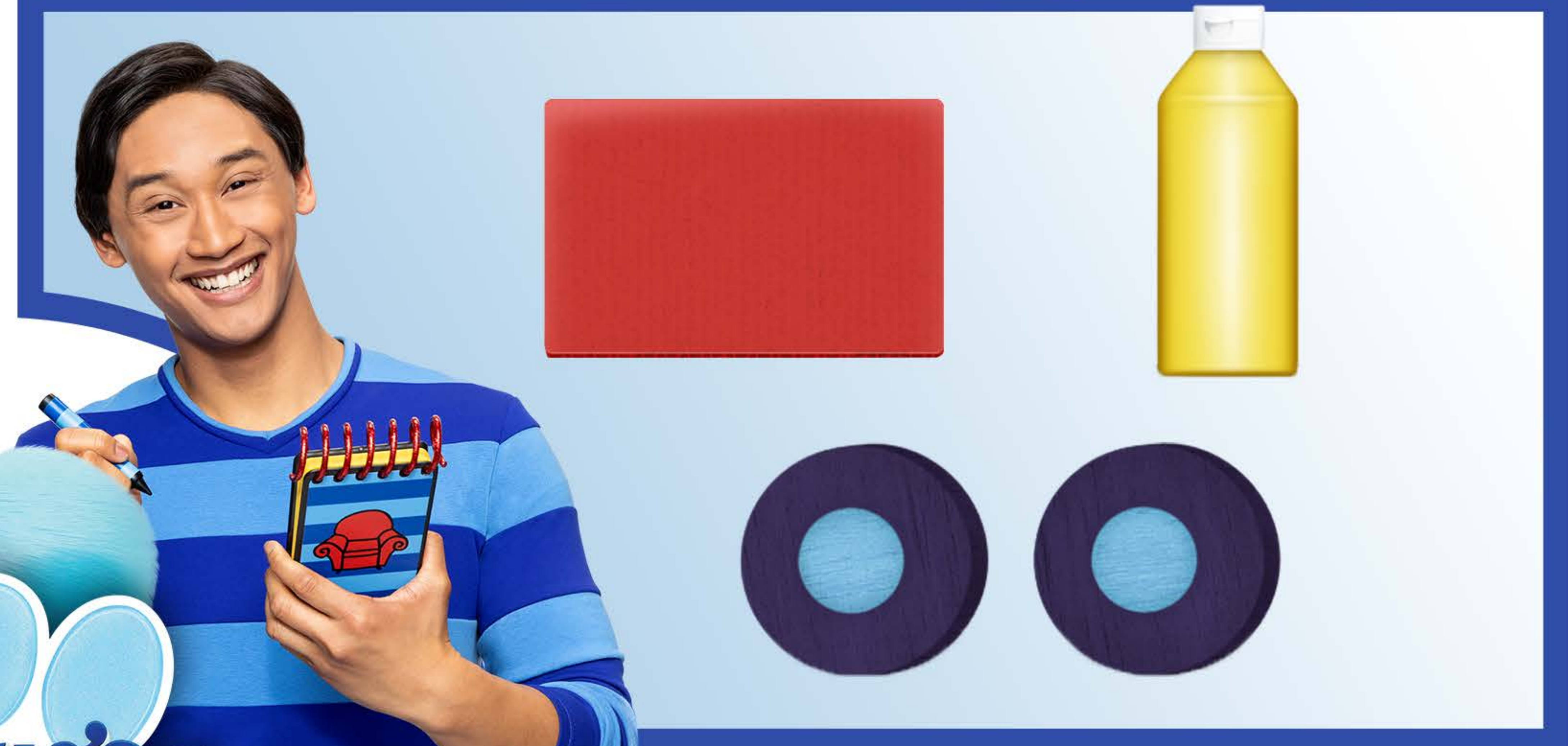


Help Figure Out Blue's Clues!

What is Blue's favorite season?



How do Blue and her friends get to school?



Where does Blue want to go one day?

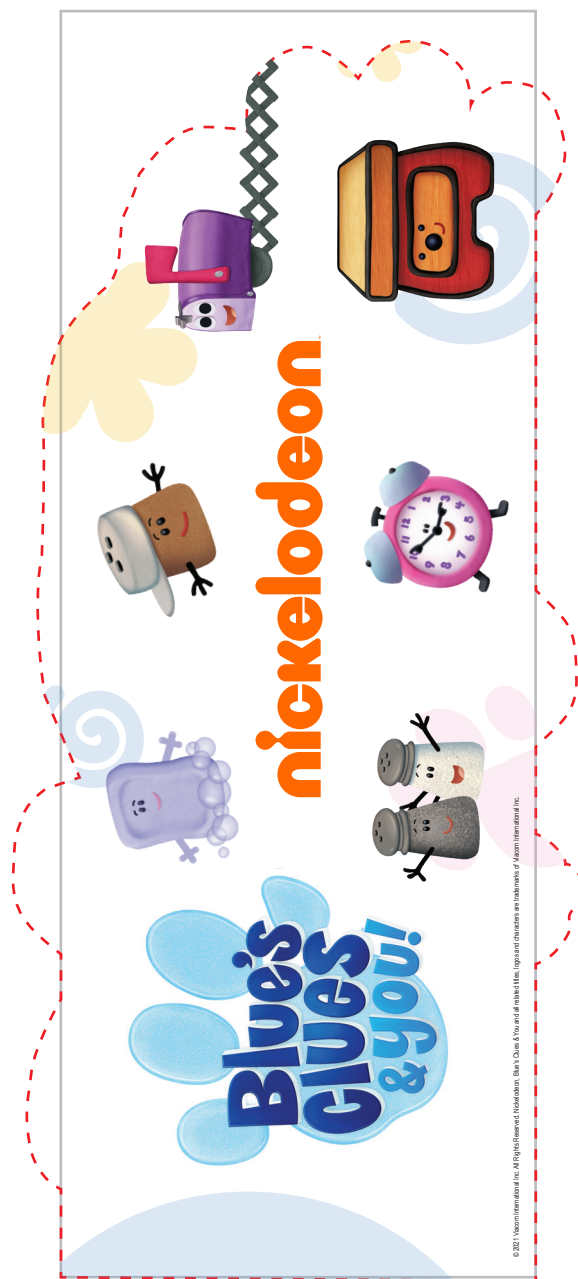


What does Blue want to do today?



nickelodeonTM

© 2021 Viacom International Inc. All Rights Reserved. Nickelodeon, Blue's Clues & You and all related titles, logos and characters are trademarks of Viacom International Inc.



The dieline should not exceed the 3"x8" live area. However, background imagery can and should cover extend into the live area.

It is not recommended that character artwork bleed to the edge of your dieline as there may be some loss during the die cut process.

A minimum of 1/10" between the edge of your character and the dieline is recommended.

Classroom Adventure Kit Enclosed



nickelodeon

© 2021 Viacom International Inc. All Rights Reserved. Nickelodeon, Blue's Clues & You and all related titles, logos and characters are trademarks of Viacom International Inc.